

Spotlighting the Brevard Rosenwald School

Empowered by Diversity

Power of Community

(Collective Ownership of Children)

Homes

Churches

Schools

Businesses

Diversity

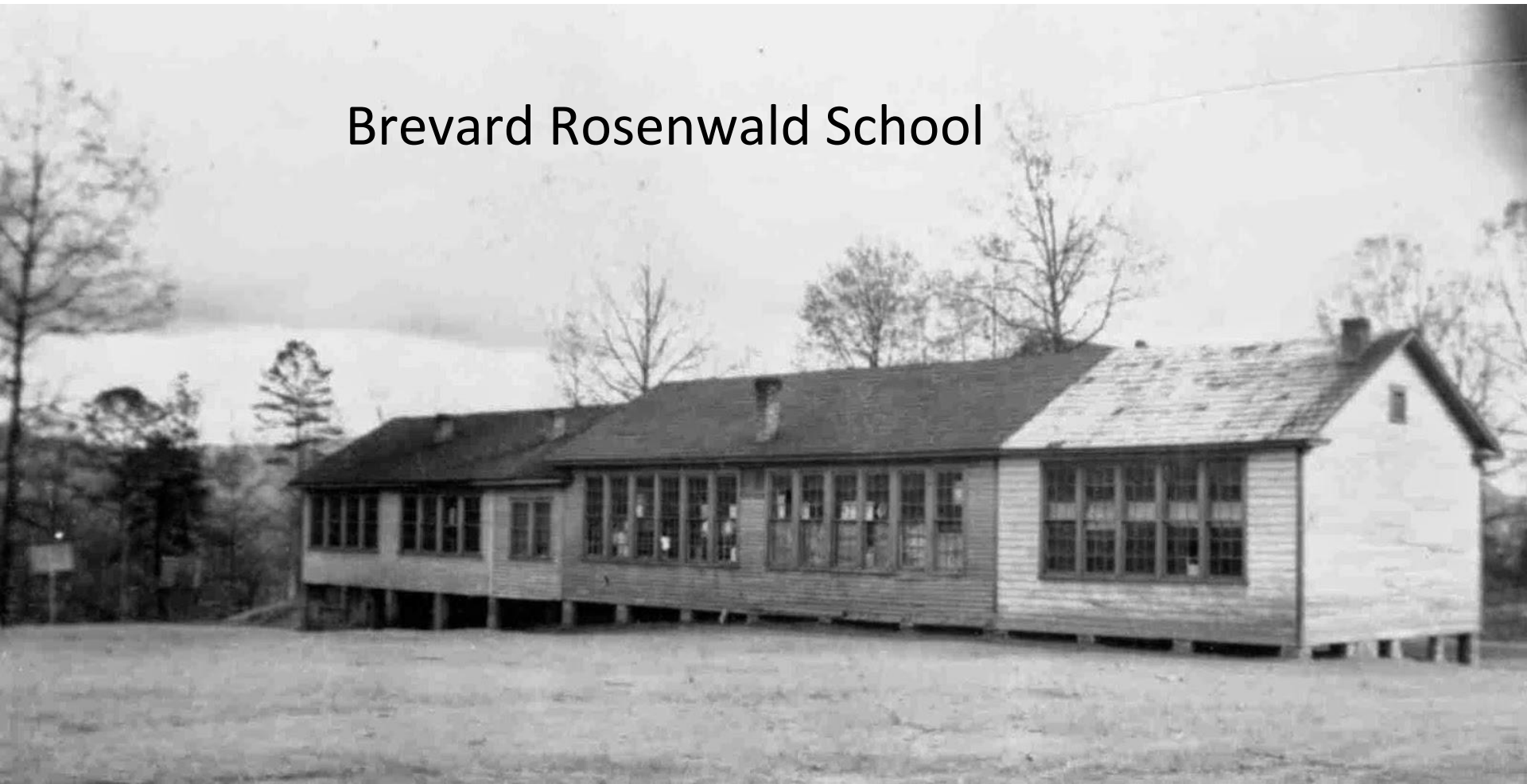
- Homer Plessy
- Julius Rosenwald
- Lewis Carr (Luigi Caria)
- Joseph Silverstein
- Harry Straus
- Gunnar Myrdal's *An American Dilemma*—Fanny Harris



Julius Rosenwald

“As an American and as a Jew, I appeal to all high minded men and women to join in a relentless Crusade against race prejudice, indulgence in which will result in the blotting out of the highest ideals of our proud nation.”

Brevard Rosenwald School



Renovation cost: \$4,850

Blacks: \$1,195

Rosenwald: \$900

Public: \$2,755

Renovations

Industrial Room

Two Cloak Rooms

Changes in Windows

Paint

New Furniture

**Reference to Rosenwald School on
July 6, 1920**

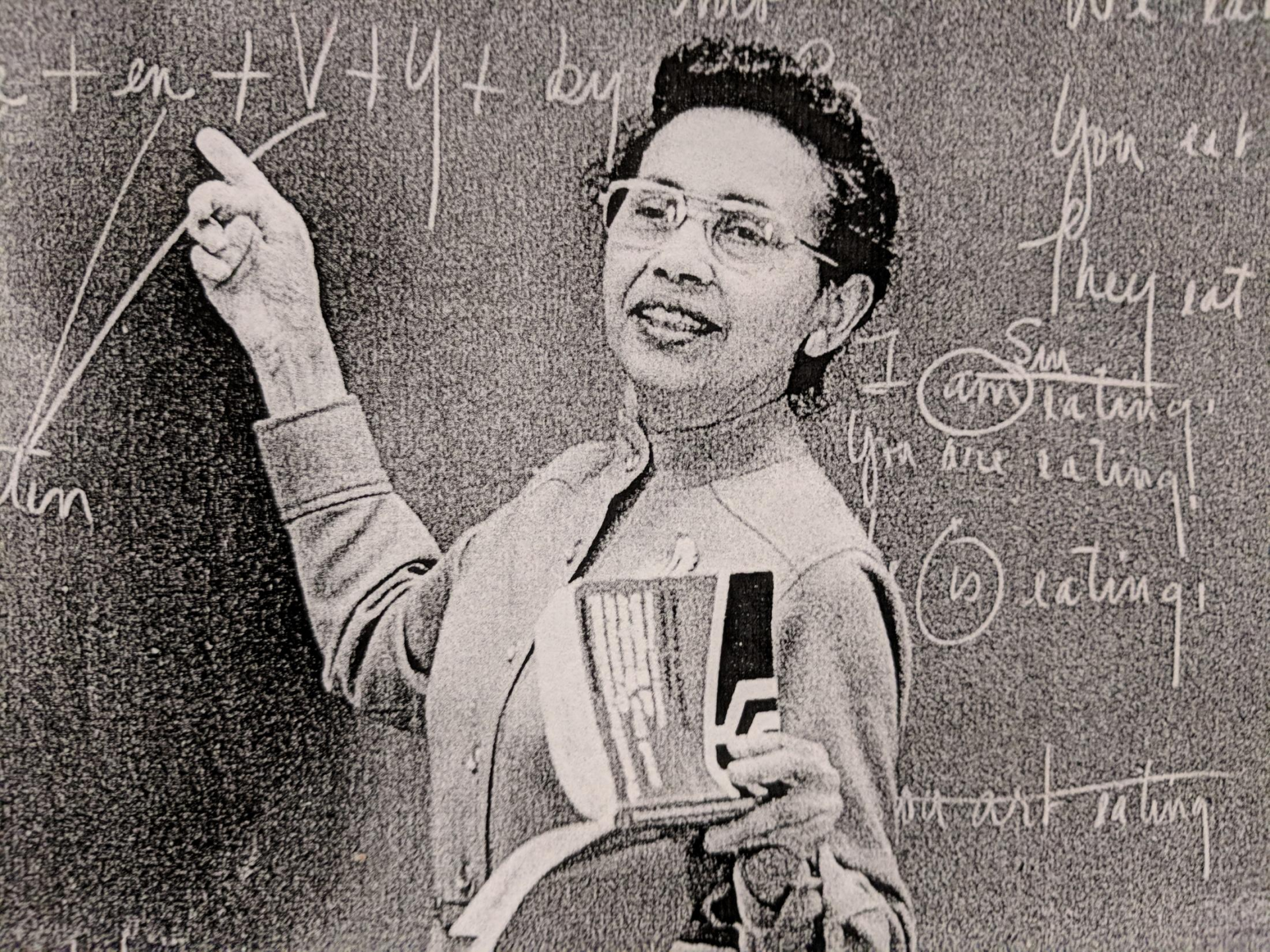


Community *joins G.W. Thompson* for photo op.



James “Jim” Aiken (1861-1909)

**Merchant (gingerbread and cider)—School
Committeeman—Firefighter – Honored on the Fallen
Firefighters Memorial May 3, 2013**



+en +V +y +by

you eat

They eat

I ^{am} eating

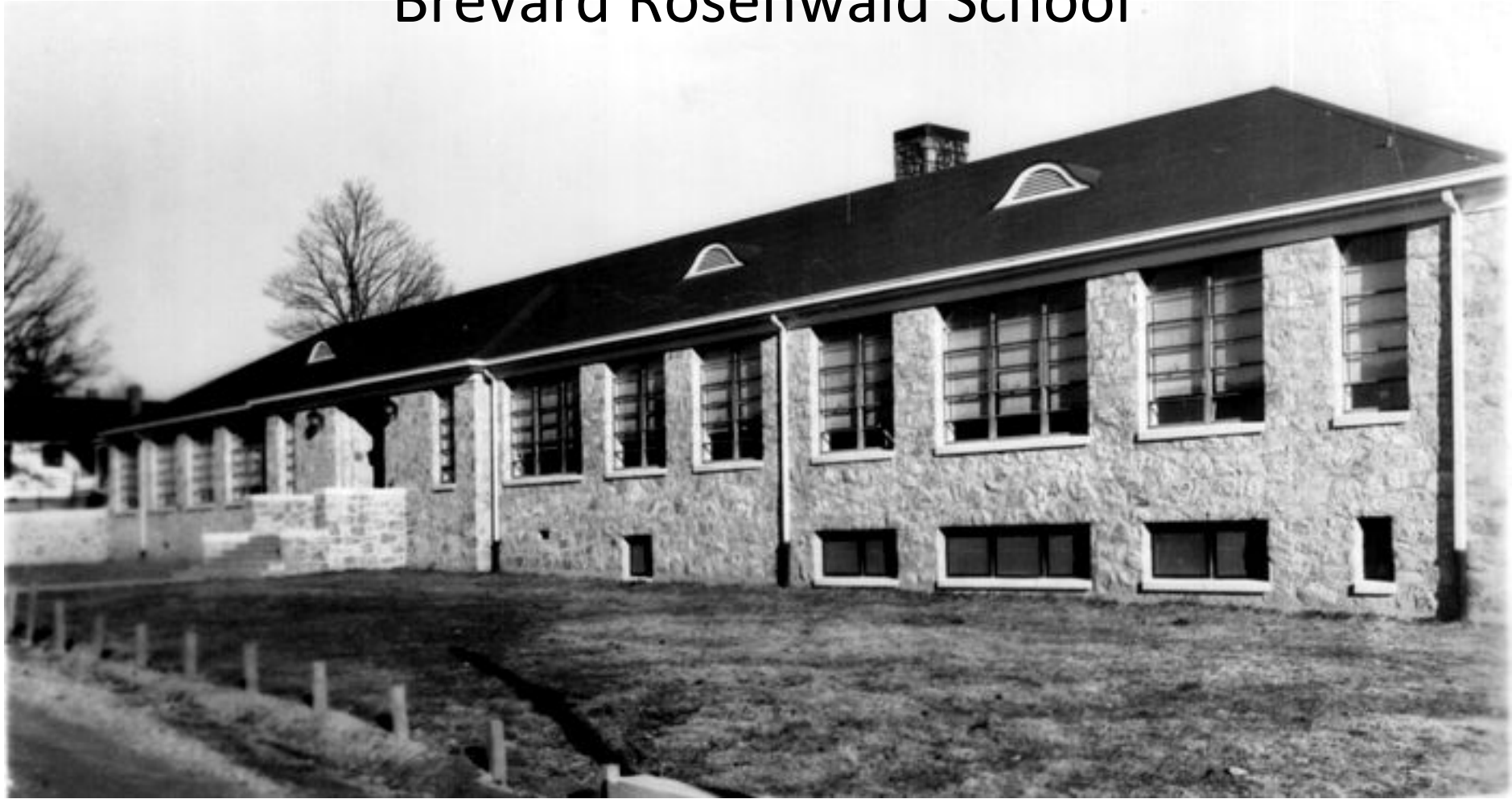
You are eating

is eating

are eating

am

Brevard Rosenwald School



Outstanding Students

F. Douglas Cantey, Attorney

Alice Glaze Robinson, Educator

Floyd Benjamin, CEO of Pasadena Research
Laboratories and Akorn, Inc., Chicago

Loretta Aiken, Actress

Thomas Kilgore, Jr., Minister and Civil Rights Leader

- ousted from Brevard
- friend of MLK
- primary organizer of the Prayer Pilgrimage for Freedom, Washington, 1957
- organized 1963 civil rights march on Washington
- led two national Baptist associations

James A. Hefner, Ph.D.

Tennessee State University



(TNStateNewsroom.com)

Integration brings end of Rosenwald School

Samuel Raper, Education Minister

**Transylvania Citizens Improvement
Organization**

Reuben Dailey, Legal Crusader

Judge Wilson Warlick, Defender of the Law

Brevard High School Football Team 1963



Bonding Made a Team-Winning Created Pride-King Cotton Hotel, Winston-Salem



Conclusion

Help from outsiders

Community Support—Uplift Club

School community of faculty, students, cafeteria workers, maintenance workers

School used as community center

Local high school but no access (taxation)

Token integration 1962—Integration 1963

August 1966—no Rosenwald School